

Abiete 2
Paphos, Cyprus

Abiete Block 2

Abiete Apartments is yet another contemporary Island blue signature apartment development located in the scenic residential area which is known as 'Universal Area' and is within close proximity to the city center of Paphos.

Abiete consists of four floors, on the first floor are two-bedroom apartments, on the second floor one 2 bedroom and one 1-bedroom apartment and on third floor one 2-bedroom apartment. A communal swimming pool on its top floor. All apartments are fully equipped with modern, top of the range fittings and finishes, dedicated parking area and allocated storage units.



Building Consists of: 5 apartments - 4 x 2 bedroom(75sq.m) & 1x1 bedroom(55sq.m)


		Built Area	Verandas		Parking	Storage	Communal Space
			Covered	Uncovered	Covered		
Ground Floor					1 - AMEA17sq.m		53sq.m
First Floor	APT. 101 2 BRM	75sq.m	17sq.m		1 - 12sq.m	2sq.m	20sq.m
	APT. 102 2 BRM	75sq.m	17sq.m		1 - 12sq.m	2sq.m	
Second Floor	APT. 201 2 BRM	75sq.m	18sq.m		1 - 12sq.m	2sq.m	20sq.m
	APT. 202 1 BRM	55sq.m	17sq.m	18sq.m	1 - 12sq.m	2sq.m	
Third Floor	APT. 301 2 BRM	75sq.m	24sq.m	52sq.m	1 - 12sq.m	2sq.m	22sq.m
Total Areas		355sq.m	93sq.m		77sq.m	10sq.m	115sq.m

Plot Area: 522m²
Total Built Area: 650m²



Project Location

- Prime location in the City Centre
- Quite residential area
- Walking distance to City Centre
- Public Kindergarten, Elementary School and High School within meters
- Walking distance to all amenities
- Beautiful mountain views

	15 km
	500 m
	1.5 km
	1 km
	500 m













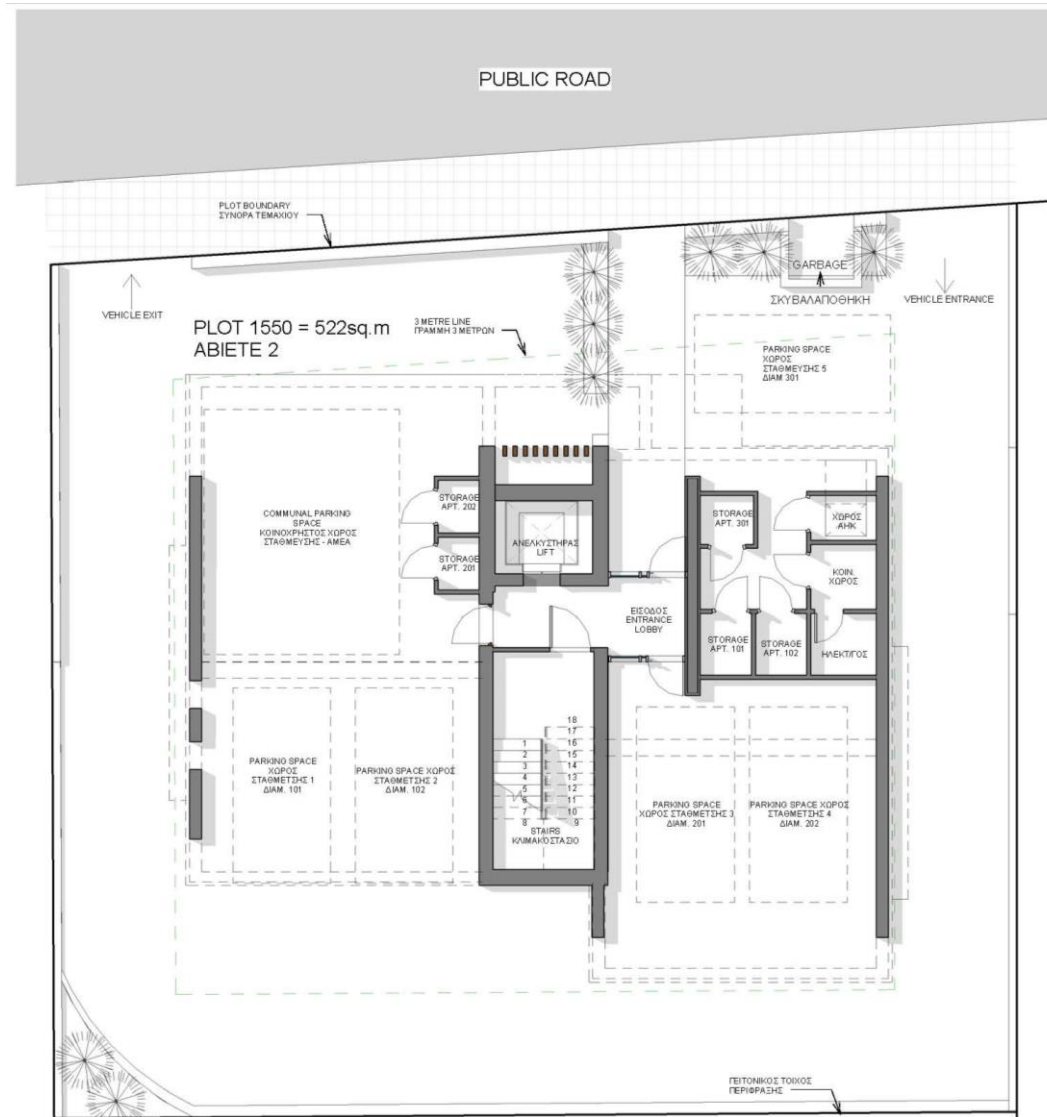


Abiete Master Plan

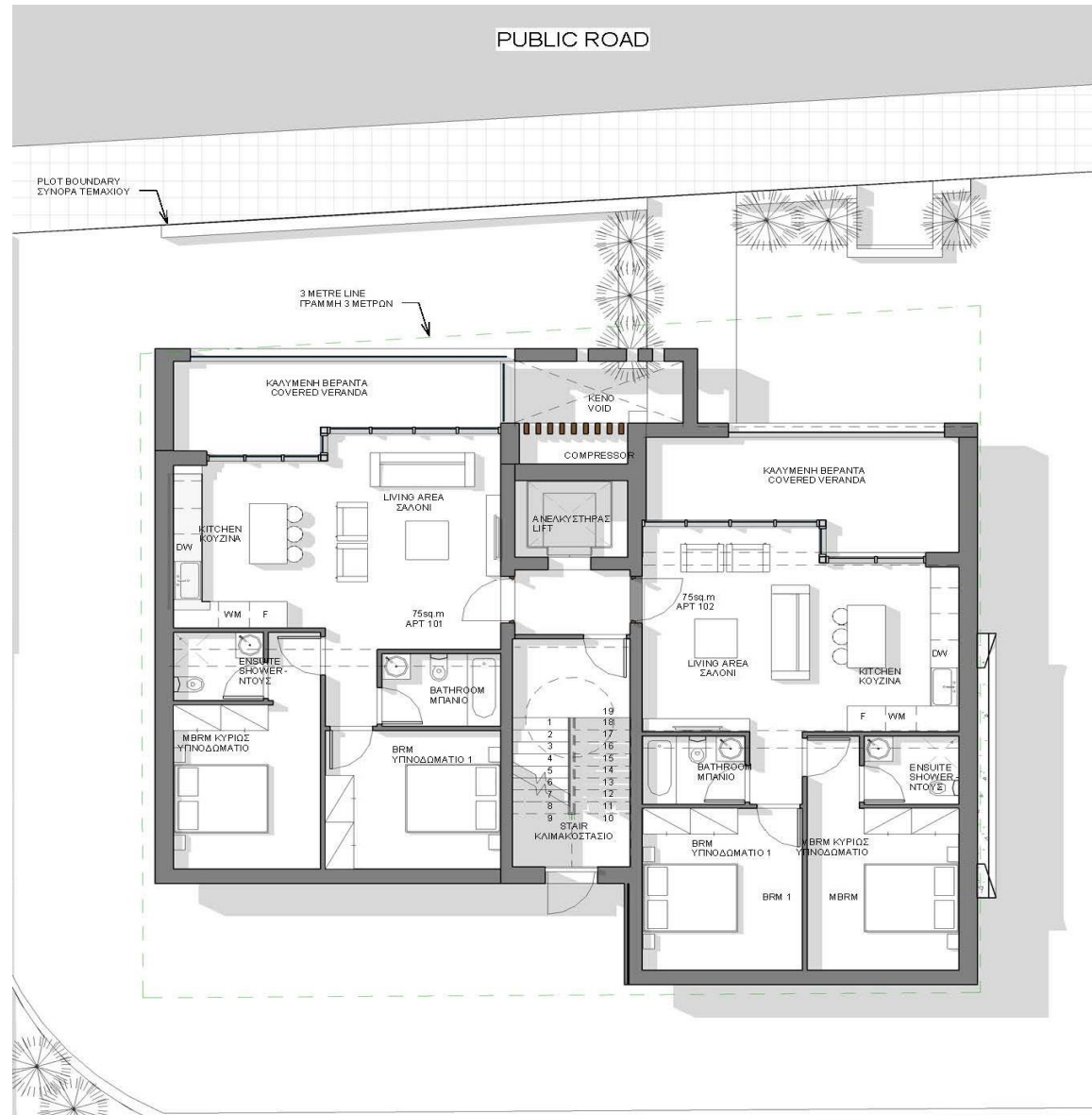
Abiete 2
Plot: 522sq.m



Abiete Plans | Ground Floor

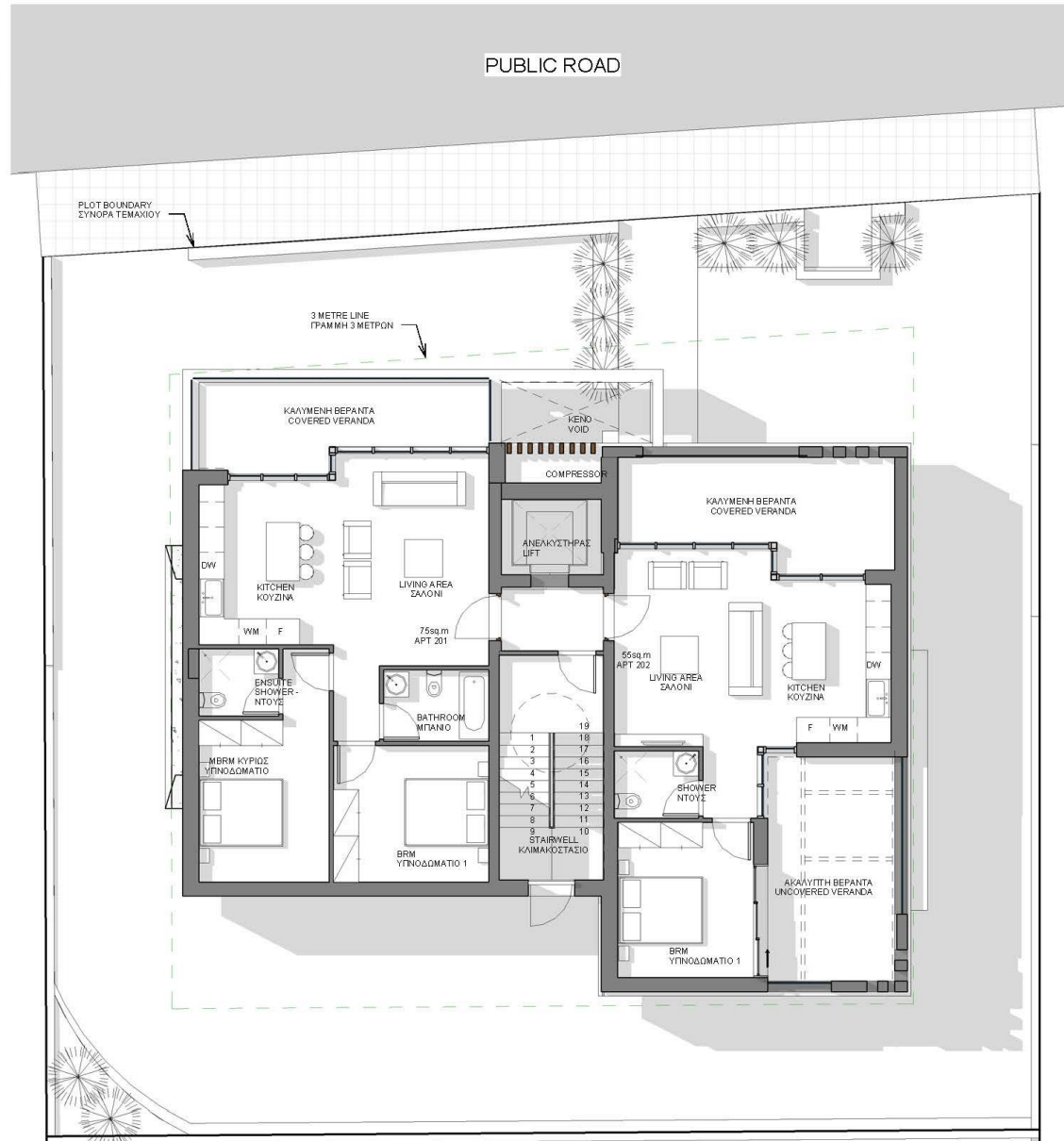


Abiete
Plans | 1st Floor
2 Bed Apt x 2 Units

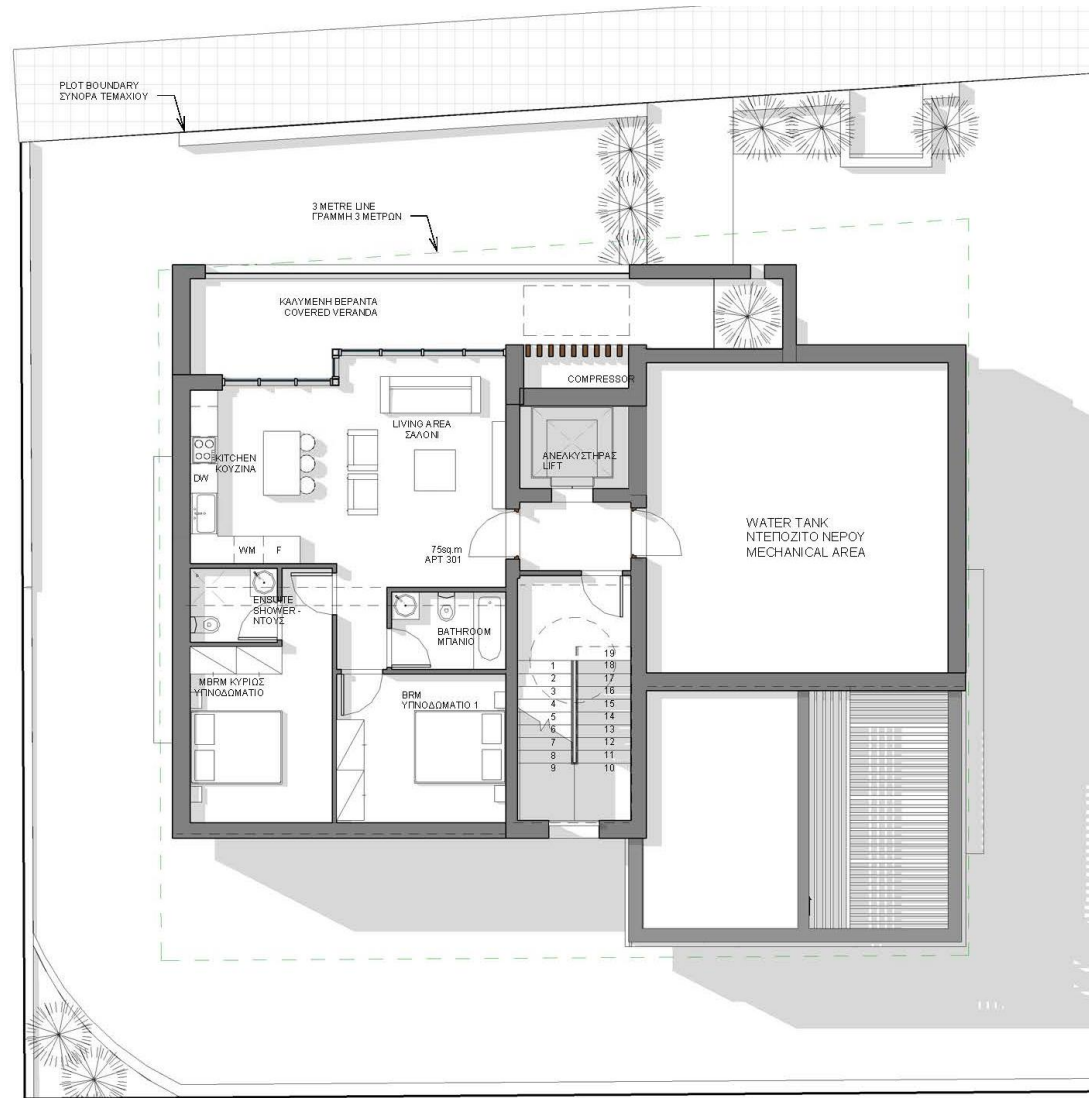


Abiete

Plans | 2nd Floor
2 Bed Apt x 1 Unit
1 Bed Apt x 1 Unit

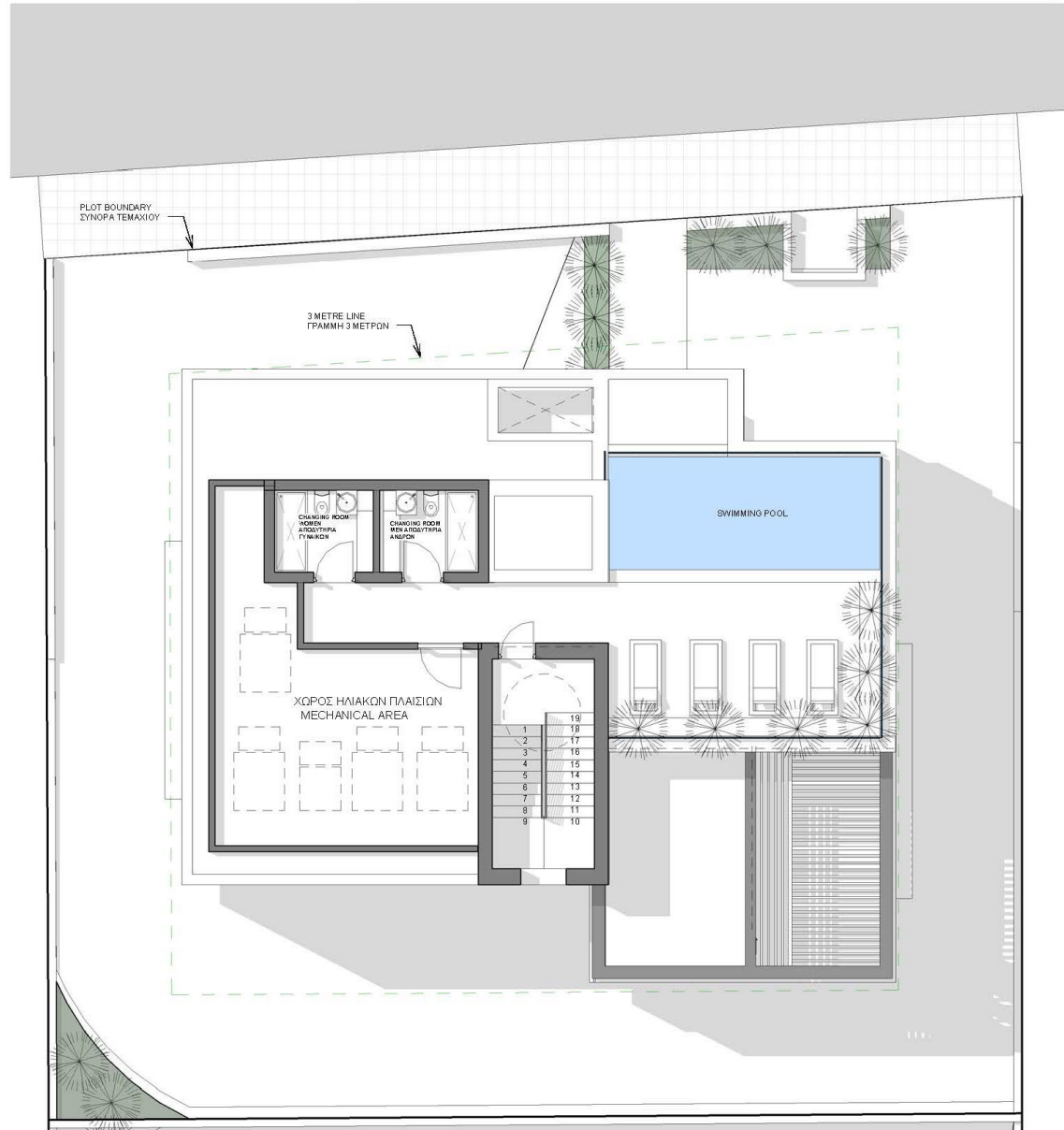


Abiete
Plans | 3rd Floor
2 Bed Penthouse

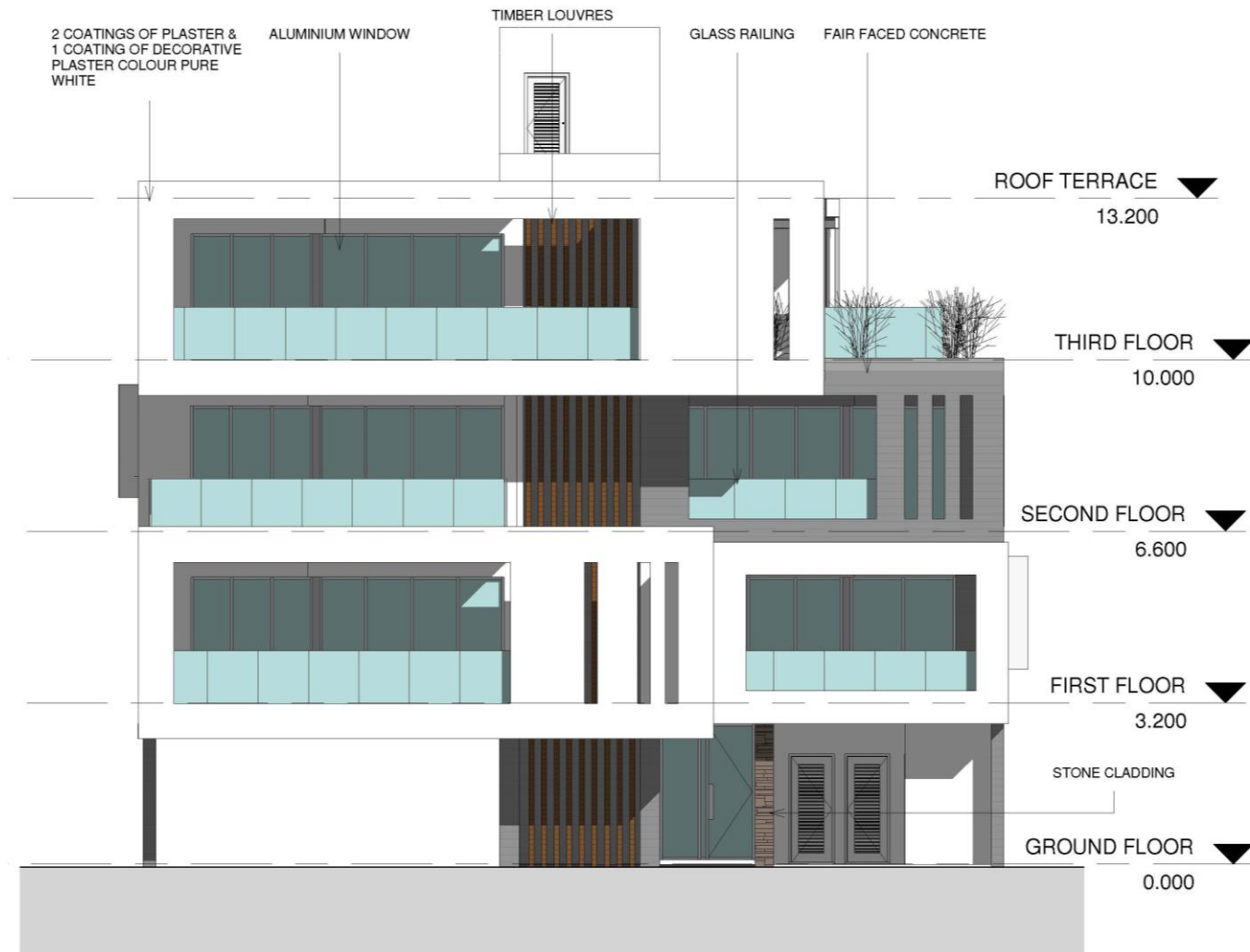


Abiete

Plans | Roof Garden with
Swimming Pool



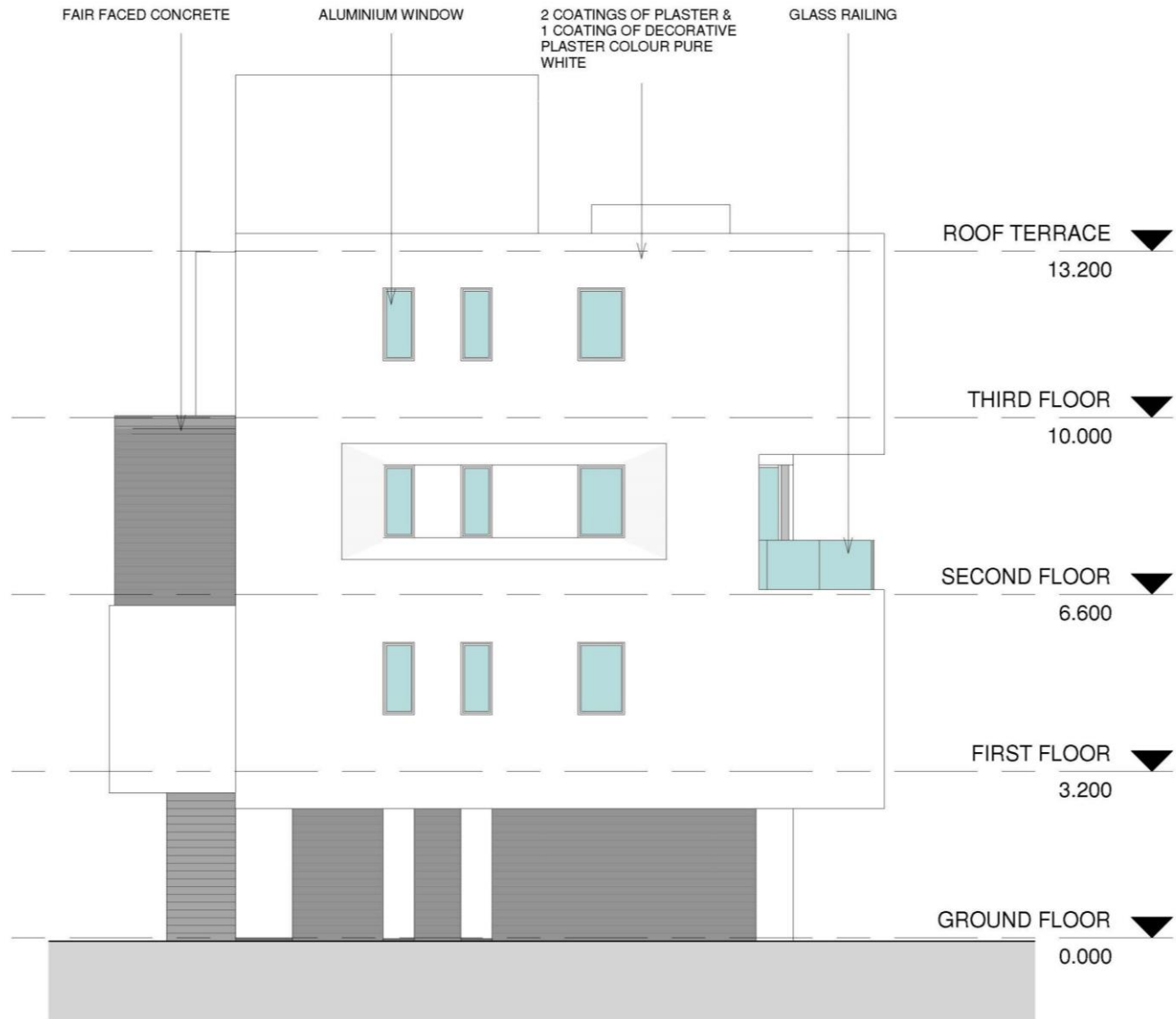
Abiete Plans | Front Elevation



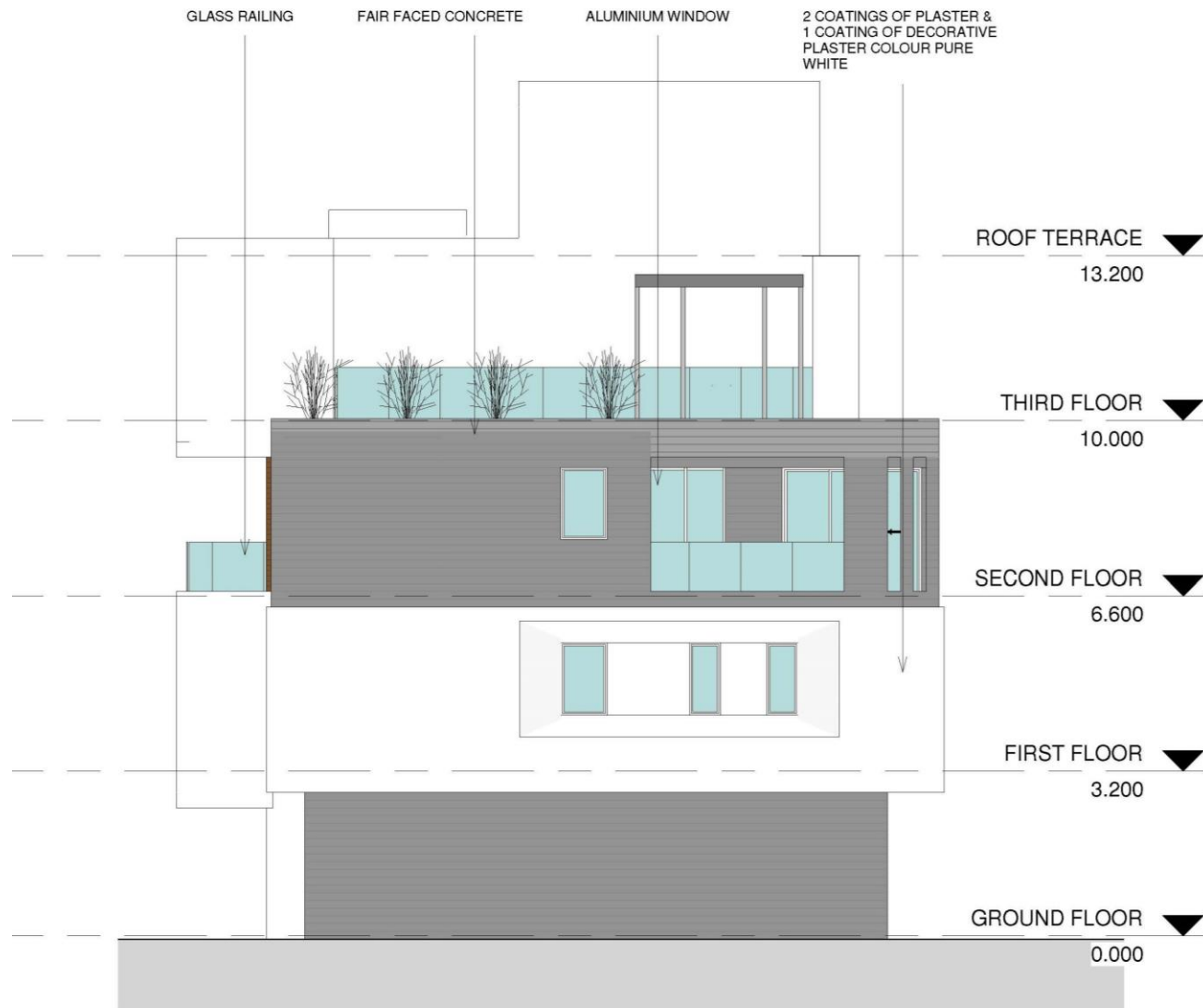
FRONT ELEVATION

Abiete

Plans | Left Elevation



Abiete Plans | Right Elevation



Abiete Plans | Back Elevation





Apartments Finishes

Internal Features

- Solid Iroko Wood Entrance Doors
- Imported Marble on Floors, Stairs and Bathrooms
- Top Quality Laminate Wooden Cupboards Doors and Wardrobes
- Granite Kitchen Worktops
- Natural Solid Oak Wood Parquet Floor in Bedrooms
- Double glazed windows with aluminum frames
- Hansgrohe mixers
- Duravit toilets with wall-mounted Geberit flush system

Other

- Lifts to all floor
- Solar system for heating water
- Pressurized water system
- Rooftop common garden & infinity swimming pool with Italian mosaic tiles
- Provision for Air - Condition System
- Quality electrical appliances - (optional - extra cost)
- Full furniture package - (optional - extra cost)
- Fully Air-Conditioning - (optional - extra cost)

External Features

- External walls will be partly on traditional stone cladding, wood cladding and fair face concrete
- High Quality Ceramic Tiles on Verandas and balconies
- Landscaped common Garden with Irrigation system
- Privately owned Parking on ground level
- Balustrade of Laminated Glass

IMPORTANT NOTES, ASSUMPTIONS AND QUOTATION CRITERIA

- Upon finalization of design and agreed Architects Preliminary Planning Drawings; a custom drafted Construction Specifications document will be produced specifically, for this property
- Square meter prices can and do vary depending upon property design, type and location. The above figures should in no way infer a standardized and are for guideline purposes only
- The above is subject to Planning Authority Terms & Conditions
- Construction Guarantee for 1 years will be given to the clients by the development company

